



Energy efficiency



Environmentally friendly



Site productivity gain



Stability



Recycling certified



Smooth manual finish



Inspiring Space



Superior aesthetic & design

Gyptone® BIG



SGBP 2019-2602

Gyptone® BIG

The product range for Gyptone® BIG comprises two standard patterns with square holes and hexagonal holes in this region. Any other patterns are available upon request. The designs are unique and creates a modern and monolithic design to the walls and ceilings. It creates an additional value to the buildings.

Gyptone® BIG is made with 4-tapered edge. With this, it is easy and quick for jointing and helps to save cost and time. It creates a high end appearance with better finishing and seamless surface walls and ceilings.

The boards have perforations which together with the acoustic backing tissue give good acoustic properties.

Gyptone® BIG has high durability and strength as the loading point can be up to 3kg per m². In addition, it gives high flexibility for designers to create high functional ceilings and walls.

WHY Gyptone® BIG?

ACOUSTICS

Modern interior designs demand ideal acoustic solutions. No longer are superior aesthetics the only deciding factors for choosing solutions. Each room has different acoustic requirements depending on the usage needs, room volume, use of materials and design.

INNOVATION

Gyptone® BIG is unique among other ceiling materials as it can take a maximum load of 3kg per m². Fixtures can therefore be installed directly onto the products which are within this weight limit. This gives far greater flexibility with design when working with lighting, speakers or ventilations.

LOW LIFE-CYCLE

Gyptone® BIG products are easy to clean and maintain. Dust can be removed with vacuum cleaning or light soap water wash. Gyptone® BIG can be re-painted with acrylic emulsion paint using short-hair roller without impairing acoustic.

ENVIRONMENT

Gyptone® BIG is produced with resource-saving raw-materials, thoroughly tested and certified as environmentally-friendly.



Activ'Air® Series

This product series adopts the new Activ'Air technology to the Gyproc® Gyptone® product line. Gyproc® Gyptone® with Activ'Air® has a special core specifically designed to decompose harmful formaldehyde emissions present in the air into non-harmful inert compounds.

Gyproc® Gyptone® with Activ'Air® can remove up to 70% of formaldehyde¹ to produce cleaner, fresher air and works for at least 50 years².

- Available in both Suspended T-Bar Ceiling and Conceal Ceiling System
- Can be used with most paints
- Easy to install, highly durable and sag resistant

1. Tests show that Activ'Air® decomposes 70% of the formaldehyde in a controlled test environment, based on 1m² installed per m³ of a room.

2. Provides at least 50 years of formaldehyde absorption based on tests and analysis.

Quattro 41 & Sixto 63 Design and Technical Data

PRODUCT DESCRIPTION

Gyptone® BIG is made of Gyproc plasterboard. The holes are punched in the boards with great precision. The boards are backed with an acoustic tissue.

FIXING

Gyptone® BIG is designed for direct or suspended screw-fixing and the boards are not demountable.

SURFACE

Gyptone® BIG is supplied unpainted. Painting is done on site after filling the joints. The boards are painted using a roller. The boards must not be spray-painted, as this considerably reduces their sound absorption capacity.

CLEANING

Depends on the surface treatment.

DIMENSIONS

Gyptone® BIG Quattro 41:

Hole size 12mm x 12mm, cc 25mm

Gyptone® BIG Sixto 63:

Hole size 6mm x 12mm

MAINTENANCE

Repainting must be done with a roller. The boards must not be spray-painted, as this impairs sound absorption.

Gyptone® BIG Quattro 41



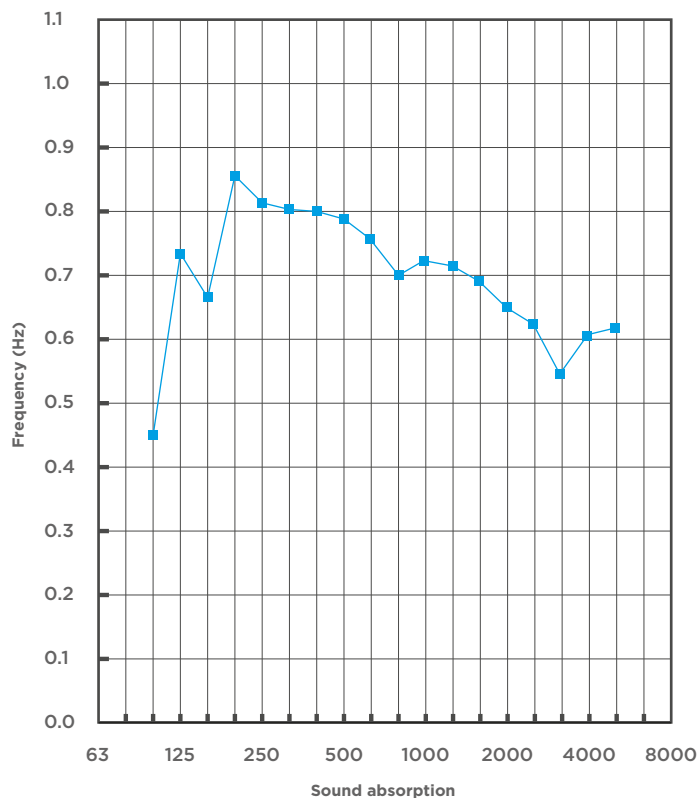
Gyptone® BIG Quattro 41

ACOUSTICS PERFORMANCE

These measurements meet the requirements of ISO 354. All measurements were carried out on standard boards with acoustic tissue laminated on the back.

The construction height specifies the distance between the undersides of the suspended ceiling and the existing construction.

The board's sound absorption is affected by the construction height and by any mineral wool installed behind them.



PRODUCT DESCRIPTION

Modular Size	1200mm x 2400mm x 12.5mm
Hole Size	12mm x 12mm
Perforated Area	16%

SURFACE

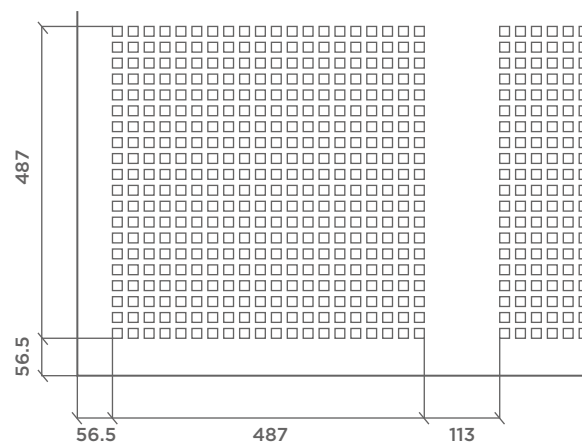
Painting is done on site after filling the joints. The boards are painted with a short hair roller.

ADVANTAGE

Four tapered edges help with quick and easy jointing and aesthetics.

TECHNICAL DATA

Acoustic performance NRC=0.75



Gyptone® BIG Sixto 63



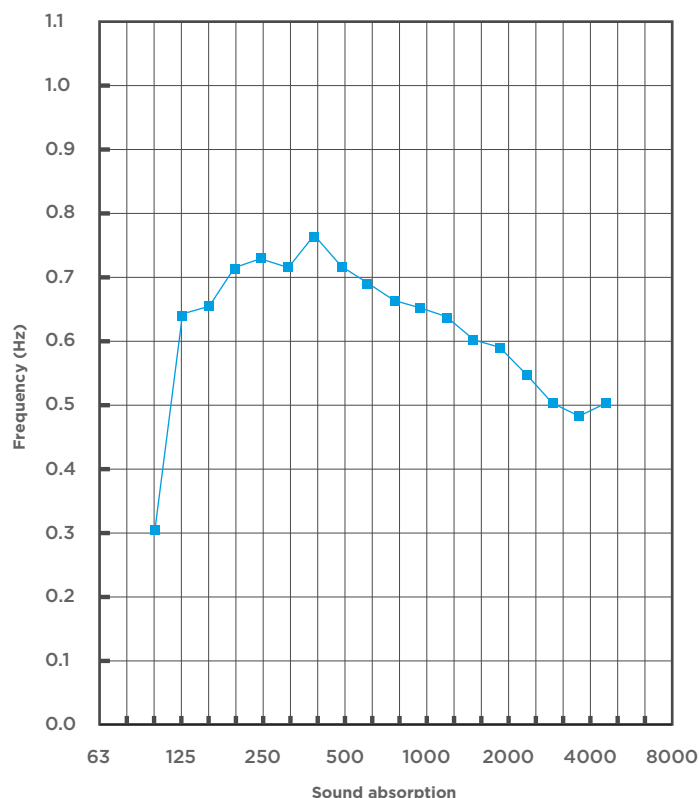
Gyptone® BIG Sixto 63

ACOUSTICS PERFORMANCE

These measurements meet the requirements of ISO 354. All measurements were carried out on standard boards with acoustic tissue laminated on the back.

The construction height specifies the distance between the undersides of the suspended ceiling and the existing construction.

The board's sound absorption is affected by the construction height and by any mineral wool installed behind them.



SURFACE

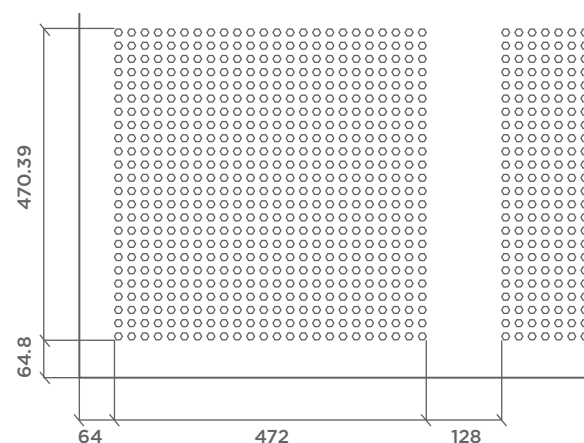
Painting is done on site after filling the joints. The boards are painted with a short hair roller.

ADVANTAGE

Four tapered edges help with quick and easy jointing and aesthetics.

TECHNICAL DATA

Acoustic performance NRC=0.70

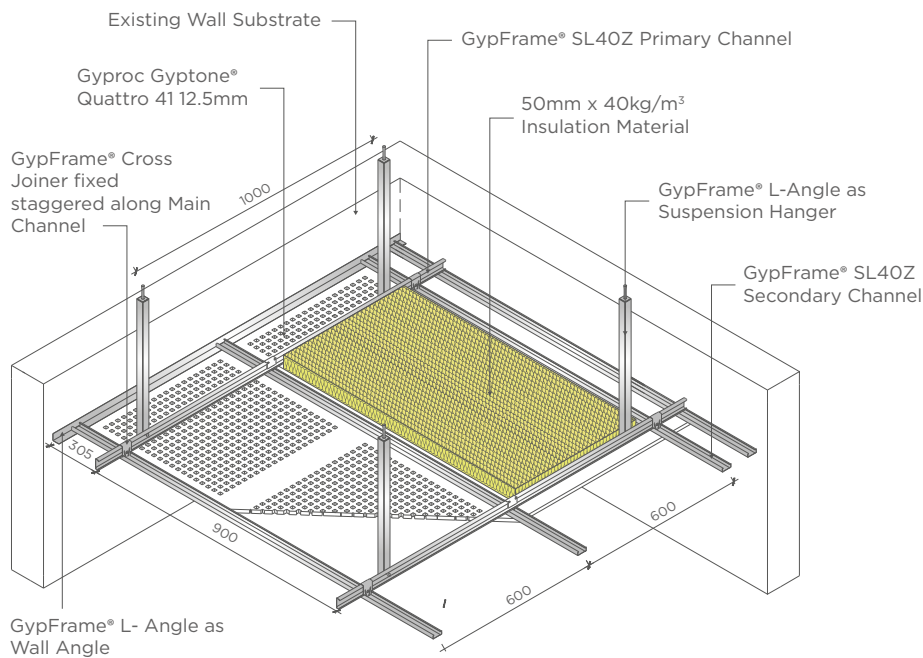


PRODUCT DESCRIPTION

Modular Size	1200mm x 2400mm x 12.5mm
Hole Size	6mm x 12mm
Perforated Area	15%

Gyproc® Acoustic Concealed Ceiling System

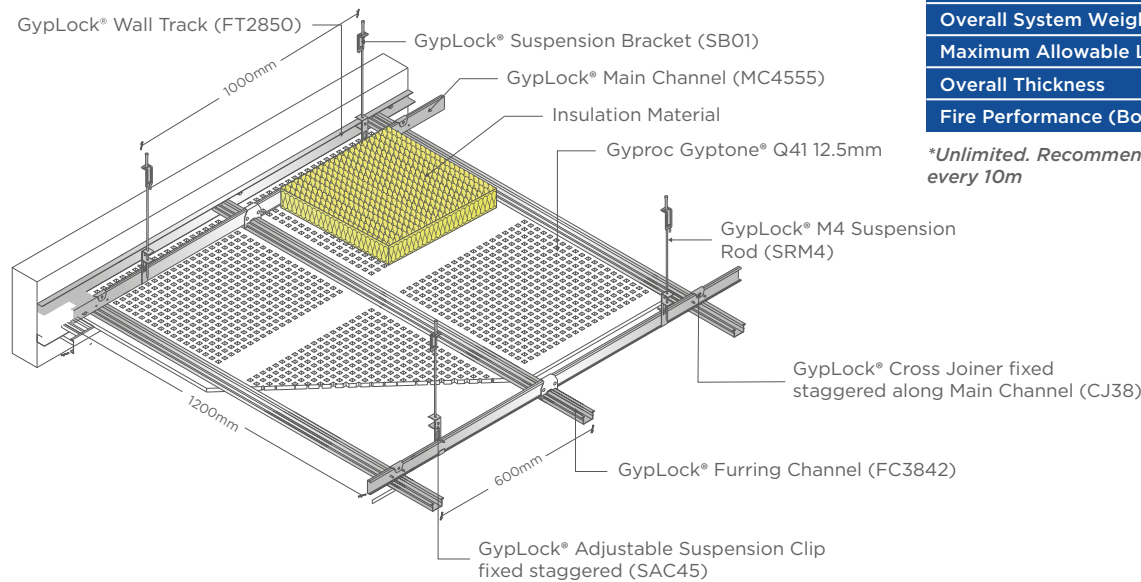
Gyproc® Acoustic Concealed Ceiling System, with eye-catching perforated designs, coupled with an integral sound absorbent tissue backing, make Gyptone® acoustic ceiling boards the natural choice for creating the ideal acoustic ceiling system.



Gyproc® SL40Z.SW

Parameters	Values
Overall System Weight	11.00kg/m²
Maximum Allowable Loads	3.00kg/m²
Overall Thickness	60.50mm
Fire Performance (Board)	Class O

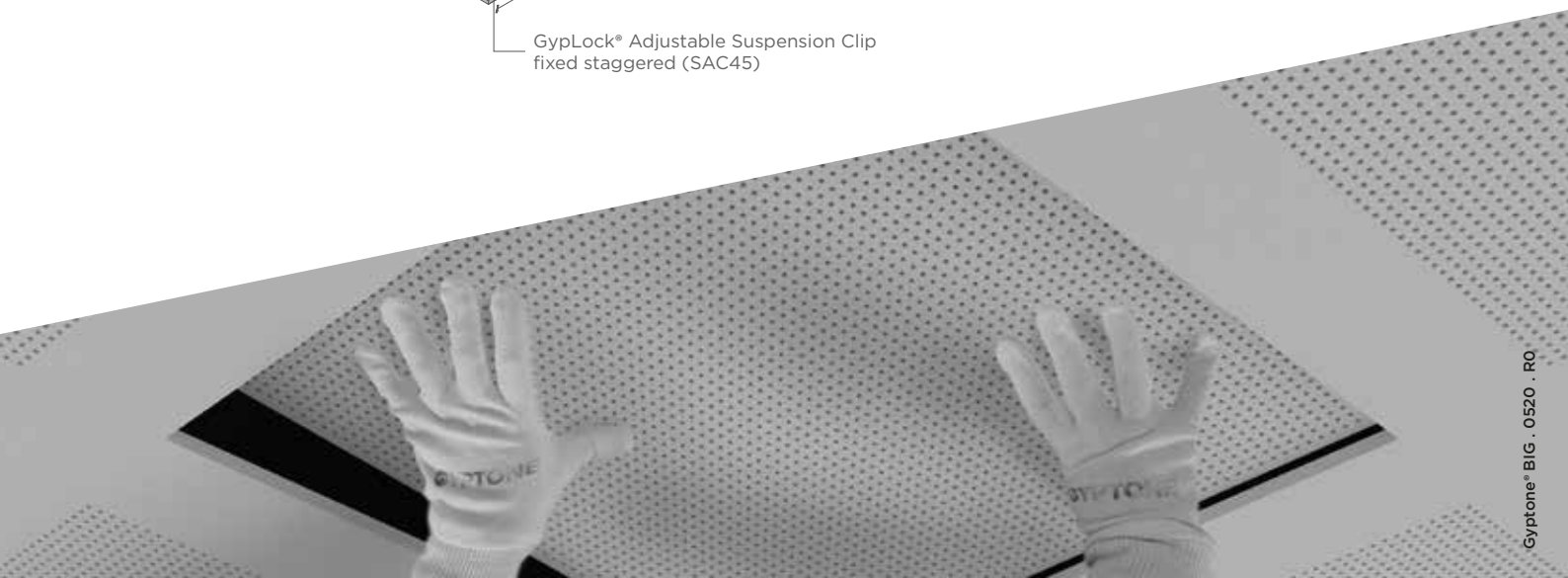
**Unlimited. Recommend to include control joint at every 10m*



Gyproc® GypLock™ Standard.SW

Parameters	Values
Overall System Weight	12.00kg/m²
Maximum Allowable Loads	3.00kg/m²
Overall Thickness	84.50mm
Fire Performance (Board)	Class O

**Unlimited. Recommend to include control joint at every 10m*





Gyptone® BIG



SCAN ME



Saint-Gobain Malaysia Sdn. Bhd.(636775-T)
No.1, Jalan Sultan Mohamad 4
Kawasan Perindustrian Bandar
Sultan Suleiman, Port Klang,
42000 Selangor, Malaysia.
Tel: +603 3169 5588
Fax: +603 3169 5688
Email: solutions.my@saint-gobain.com
www.gyproc.my

SINGAPORE OFFICE
Saint-Gobain (Singapore) Pte.Ltd.
2 Venture Drive, #09-10/11/12/13/14
Vision Exchange
Singapore 608526
Tel: +65 6330 8288
www.gyproc.sg