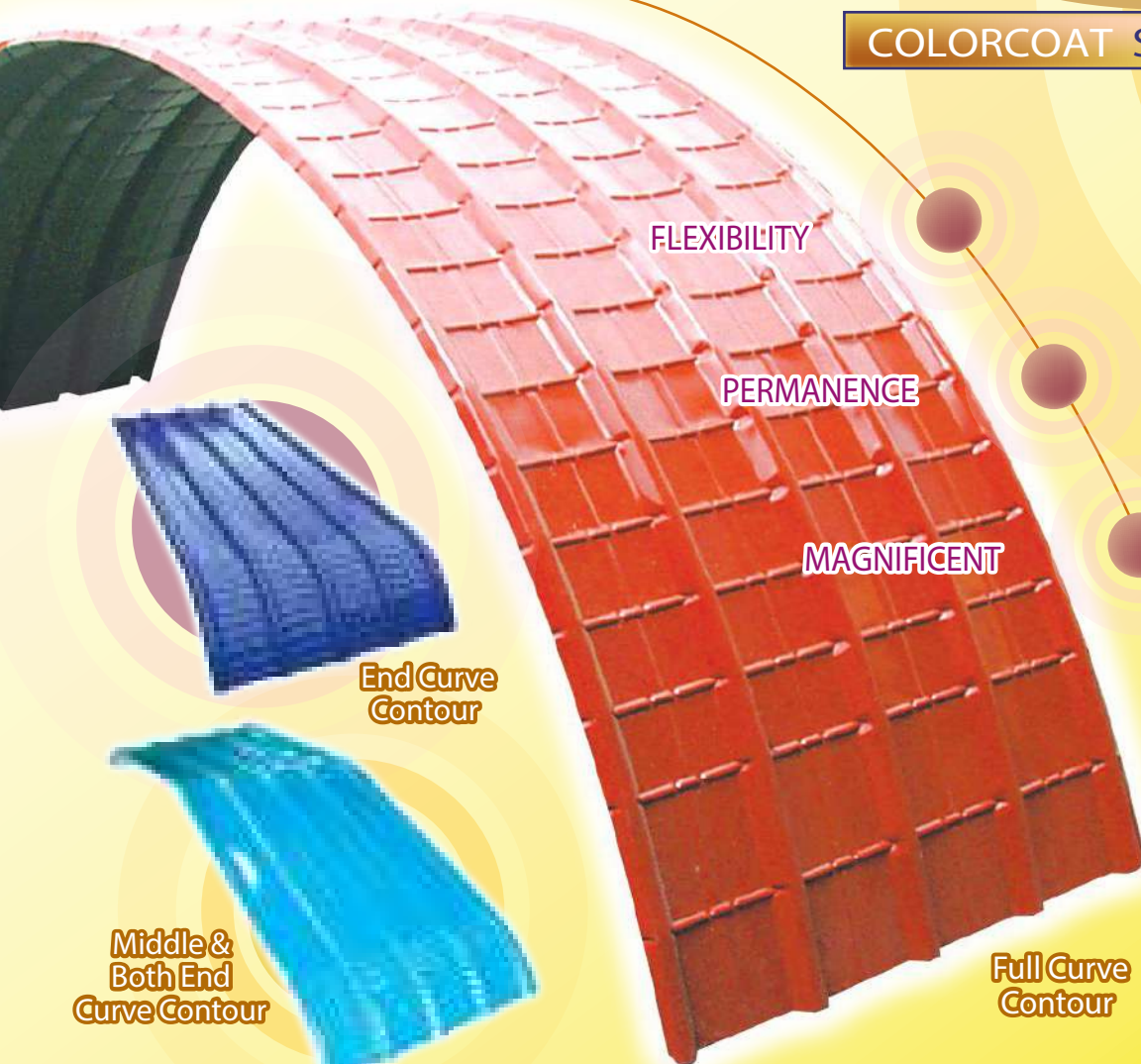


*Quality makes
a Difference*

ZINCURVE™

COLORCOAT STEEL ROOFING



Product introduction :

ZincCurve consist of **Full Curve Contour**, **Middle and Both End Curve Contour** and **End Curve Contour** which was developed to provide versatility and creativity, giving softer look for a building and enhance its appearances and finishing.

Main Advantages :

- Less supporting framework for ridges, fascias and parapet.
- Do away with the conventional ridge capping as the roof is fully rounded at the apex.
- Reduced work involved in installation of ridge capping and fascia cladding.

Material Used :

1. **ZincCurve** is available in both AlumZinc and Prepainted Material. The base steel used conforms to Grade CGCH (550mPa) and the thickness of steel use varies from 25G to 28G (0.5mm-0.33mm). The minimum yield strength of min 550mPa shall apply.

AlumZinc Steel is a revolutionary zinc/aluminum alloy-coated steel with a nominal composition of 43.4% zinc, 55% aluminum and 1.6% silicon (AZ150) which conforms to AS1397 and has a clear resin coating which gives it a glowing-smooth finishing.

2. **Self Cleaning ColorCoat** is a polyester based system where silicate is added to the topcoat producing resistance surface to protect painted surface against dirt pick-up. The main purpose is to produce a self-cleaning mechanism (hydrophilic) character for its surface washable ability, which resist dirt and particles from being bonded to the surface and thus facilitate siding maintains. Self Cleaning ColorCoat offers an excellent UV resistance and balance between flexibility and hardness, thereby resistant to cracking, peeling, fading and chipping.

3. **PVdF ColorCoat** is a special high anti corrosion coating made available for high corrosive condition. The binder of this coating contains 70% Polyvinylidene Fluoride which offers a unique combination of excellent chemical resistance. The high performance fluopolymer resin with its extraordinary capacity to retain color and gloss, keeps painted metal looking vibrant and appealing.

4. **Prepainted ColorCoat Galvanizing JIS G3312** are coated sheets through continuous Color Coating Line Process which are fully computerized and automated. It is capable of a 2-coat and 2-bake process. The coating is high-grade material with excellent adhesive and weather resistant properties.

PAINT COATING SYSTEM

Pretreatment : Cleaning and chemical treatment for corrosion resistant conversion coating

Primer Coat : Corrosion inhibitive Primer coating. Nominal thickness 5-10µm max on both side

Finish Coat : A variety of finish coat is available. Nominal thickness 20-25µm max

Backer Coat : Service coat on the backside. Nominal thickness 5-10µm max

JINCORP SDN. BHD.

No.18, Lorong Sukun 28, Lot 1168, Jalan Sukun, Upper Lanang Industrial Estate, 96000 Sibul, Sarawak

Tel : 6-084-210800 Fax : 6-084-210900

Lot 672, Block 31, Kemena Land District, Bintulu Light Industrial Estate, Jalan Sultan Iskandar, 97000 Bintulu, sarawak

Tel : 6-086-330930 Fax : 6-086-330930



(353578-M)

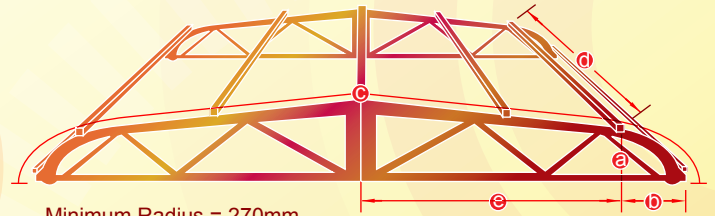
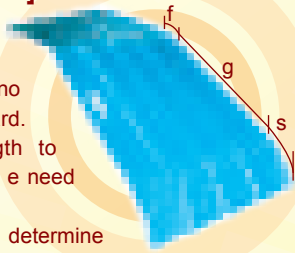


Cert. No: KLR 0500024

PROFILE DIAGRAM

[MIDDLE & BOTH END CURVE]

The unity of MIDDLE AND BOTH END CURVE suit directly to the pitch on both side structure with no lapping, a one piece stretched forward.
c = Actual Curve Roofing Length to calculate its dimension, while a,b & e need to measure from the frame.
d = dimension in feet, 2.5 feet to determine number of pieces required.

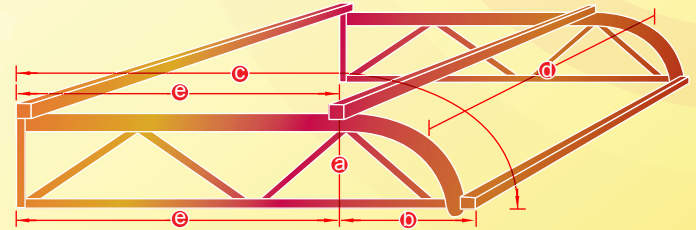
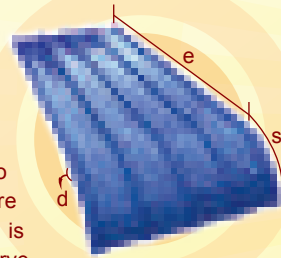


Minimum Radius = 270mm
Minimum Distance (g) = 200mm
Minimum Distance (f) = 50mm

[END CURVE]

c = Actual Curve Roofing Length to calculate c dimension, a,b and e, need to measure from the frame.

The Best way to do the awning is to order Curve Roofing first before proceeding with the frame work. It is better to use standard degree of curve roofing to determine the suitable frame.

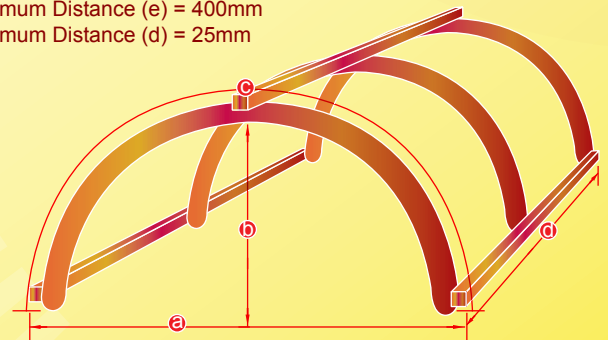


Minimum Radius = 270mm
Minimum Distance (e) = 400mm
Minimum Distance (d) = 25mm

[FULL CURVE]

C, actual Arc Length or actual full curve length can be obtain from :

1. Direct measure from frame
2. Calculate from dimension a,b provided



Minimum Radius = 650mm
Minimum Distance (a) = 1300mm
Minimum Distance (b) = 650mm

COLORCOAT COATING SYSTEM

Finish (Top) Coating 15-25µm max
Primer Coating 5-15µm max
Chemical Pretreatment
Zinc Coating
Cold Rolled Steel (Base)



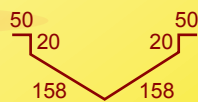
Zinc Coating
Chemical Pretreatment
Primer Coating 5-10µm max
Service (Backer) Coating 5-10µm max

ACCESSORIES

Note : All measurements are in millimeters (mm)



Ridge Capping



Valley Gutter



Wall Flashing



Fascia Corner



Barge Capping



Fascia Flashing

OTHER PRODUCTS



ZinDek



ZinDek AlumZinc



ZinSpan



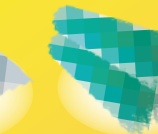
ZinEverroof



ZinRoof



Cap Rumah



Zin PVC and GI Fencing



Zin PVC and GI Barbed Wire



Zin BRC



ZinPlus



ZinTruss



RE-CYCLE



BUATAN MALAYSIA

Distributor: